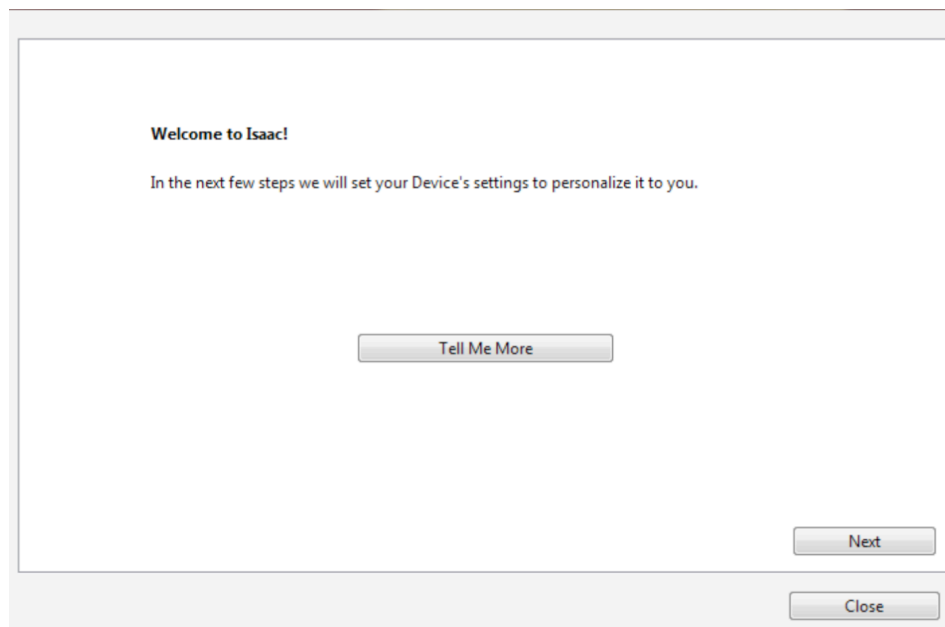


ISAAC™ Software 4.1+ Simple Setup Procedure

PowerPod® Power Meter Newton® Power Cycling Computer

April 2017



INTRODUCTION

Simple Setup makes it easy to set up your PowerPod or Newton power meter, without learning about, or navigating, all of the advanced features and screens of Isaac software.

When Isaac 4.1 is *first installed* on any computer (**that is, no version of Isaac has ever been installed previously on the computer**), the Simple Setup screens are presented BEFORE any other Isaac screens are shown.

If you *have* previously installed Isaac on your computer, then you will NOT be presented the Simple Setup screens when you launch Isaac. HOWEVER, the Simple Setup procedure is always available from the “Device/Setup Device...” menu item in Isaac).

SPECIAL NOTE

Simple Setup uses the word “Device” to refer to your PowerPod or Newton. When you see the word “Device”, the command works the same for both products.

COMPUTER SYSTEM REQUIREMENTS

Macintosh:

Intel Mac
Mac OSX 10.4 or higher
128MB RAM memory

Windows:

Isaac 4.1+ is not compatible with Windows XP or older

Windows 7, 8, 10
128MB RAM memory

HOW TO INSTALL ISAAC SOFTWARE

Isaac 4.1+ is not compatible with Windows XP or older

Windows (Windows 7, 8 and 10)

DO NOT PLUG IN YOUR USB ADAPTER UNTIL INSTRUCTED TO DO SO.

1) Download the latest version of Isaac for Windows software here:

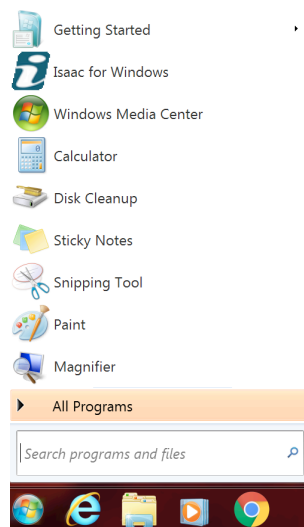
<http://www.ibikesports.com/index.php/downloads/>

2) Install Isaac 4.1+ software

3) Plug in your USB cable to your PC. Connect the other end of the cable to your Device, and **make sure your Device is turned on.**

A series of messages will appear telling you that your USB drivers have been installed successfully.

Once your Isaac software is installed (and USB drivers, if necessary), click on the Start button. You'll see the Isaac for Windows icon in your menu:



Software Installation: Mac OSX

1) Download the latest version of Isaac for Mac software here:

<http://www.ibikesports.com/index.php/downloads/>

2) After downloading and unzipping, double click on the Isaac for Mac.dmg icon. You will see this:



3) Follow the procedure illustrated in the window above:

1. **Hold the Control button, and**
2. **then click on the Isaac icon, and**
3. **then select “Open” from the pop-up window**

As you install Isaac and its NI-VISA and Si Labs drivers, **make sure to use the Control-Click-Open procedure for all three installations.** YOU WILL NEED TO RESTART YOUR COMPUTER TWO TIMES DURING THE MAC INSTALLATION PROCESS.

4) After the first restart of your Mac, open Isaac to continue the software installation process (Si Labs drivers). Use Control-Click-Open when installing the drivers, then restart when instructed.

Isaac for Mac will be located in your Applications folder

CRITICAL: To avoid problems with Apple’s OSX security features, MAKE SURE TO HOLD THE CONTROL BUTTON ON YOUR KEYBOARD, THEN CLICK ON THE ISAAC ICON, THEN SELECT “OPEN” IN THE POP UP MENU. FOLLOW THIS PROCEDURE FOR ALL THREE SOFTWARE INSTALLATIONS

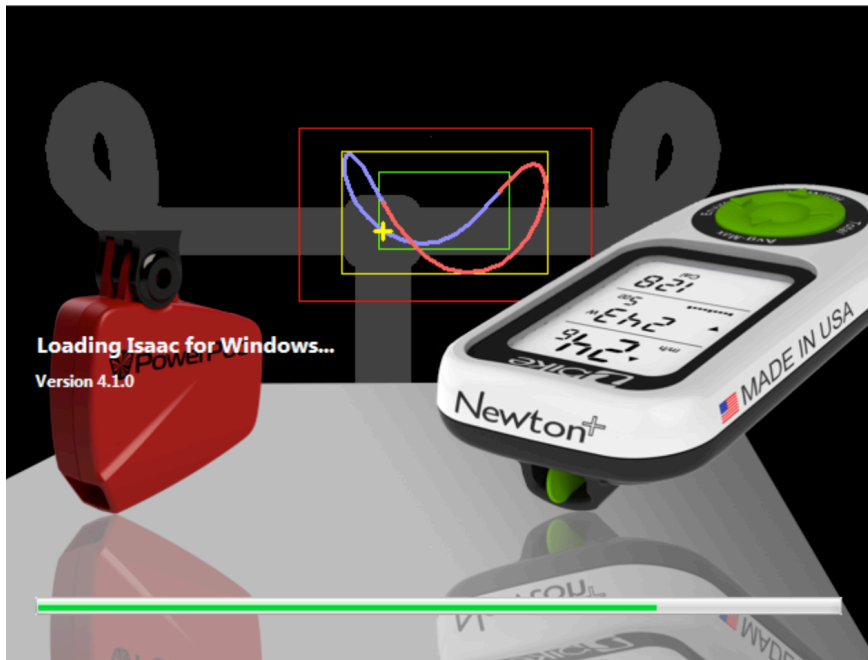
USING SIMPLE SETUP

1. CONNECT YOUR DEVICE TO YOUR COMPUTER

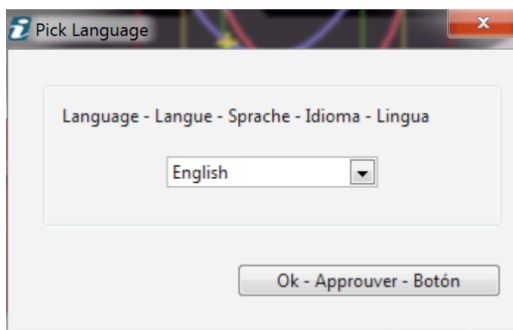
- 1) Connect the USB cable to your Device.
- 2) Make sure your device is turned on (Newton: characters appear on the LCD screen; PowerPod: status light flashes).
- 3) Connect the other end of the cable to a USB port in your computer.

2. LAUNCH ISAAC 4.1+ SOFTWARE

3.

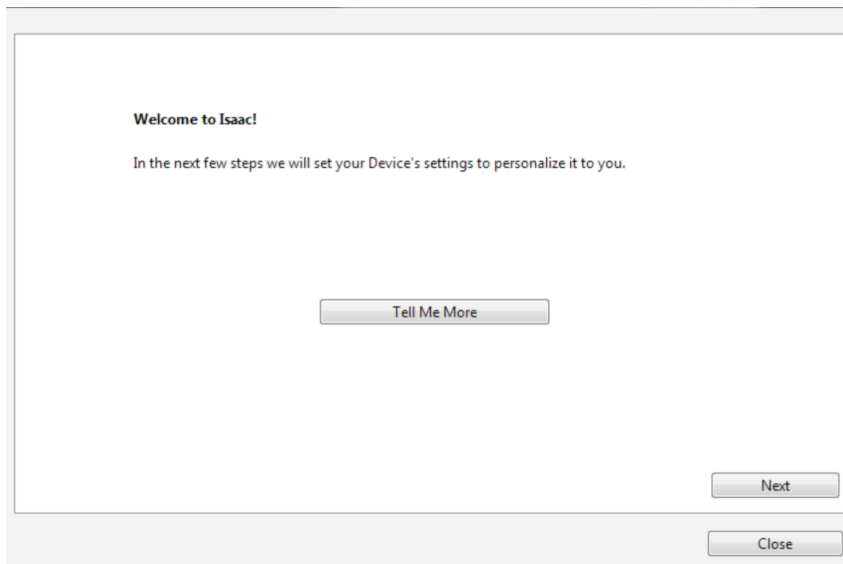


4. SELECT YOUR LANGUAGE

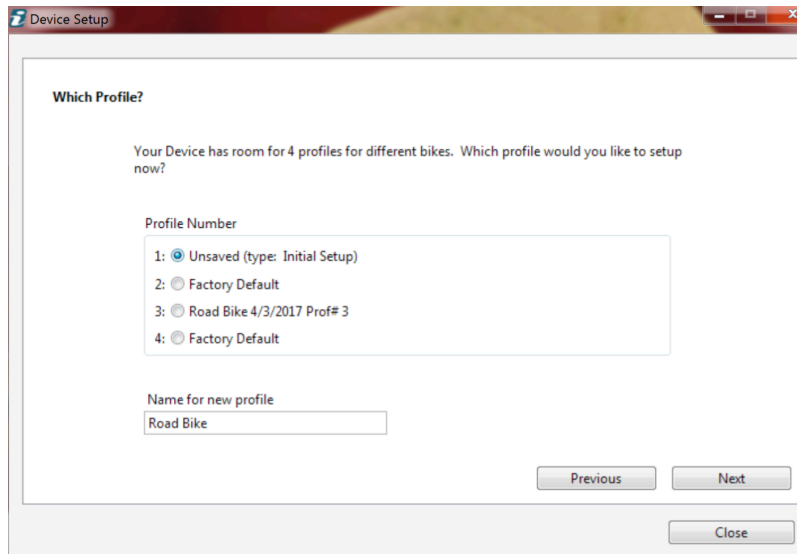


5. BEGIN SIMPLE SETUP WITH THIS SCREEN

As you complete each step, click “Next” button

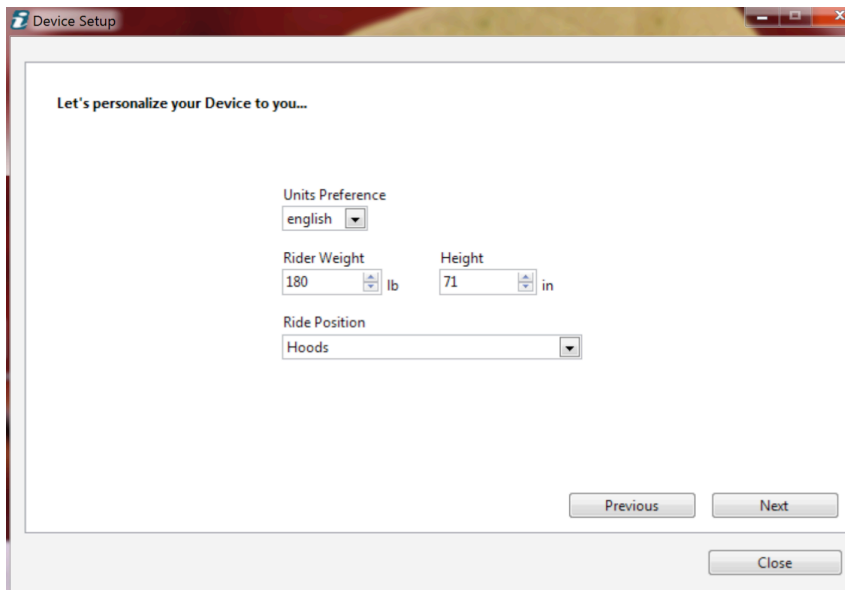


6. SELECT AND NAME PROFILE



- a. If your Device is “OUT-OF-THE-BOX NEW”, then profile 1 is selected by default (radio button is next to Profile 1). Give your profile your special name in the “Name for new profile” box.
- b. If you are using Simple Setup for a new profile (say, for your second bike), then select a different profile number, and type in a name for your new bike)

7. SET YOUR BODY WEIGHT, HEIGHT AND RIDE POSITION



The screenshot shows a 'Device Setup' window with the title bar 'Device Setup'. The main content area has the heading 'Let's personalize your Device to you...'. Below this, there are three settings: 'Units Preference' with a dropdown menu set to 'english', 'Rider Weight' with a numeric input field set to '180' and a unit dropdown set to 'lb', and 'Height' with a numeric input field set to '71' and a unit dropdown set to 'in'. Below these is 'Ride Position' with a dropdown menu set to 'Hoods'. At the bottom right, there are three buttons: 'Previous', 'Next', and 'Close'.

Let's personalize your Device to you...

Units Preference
english

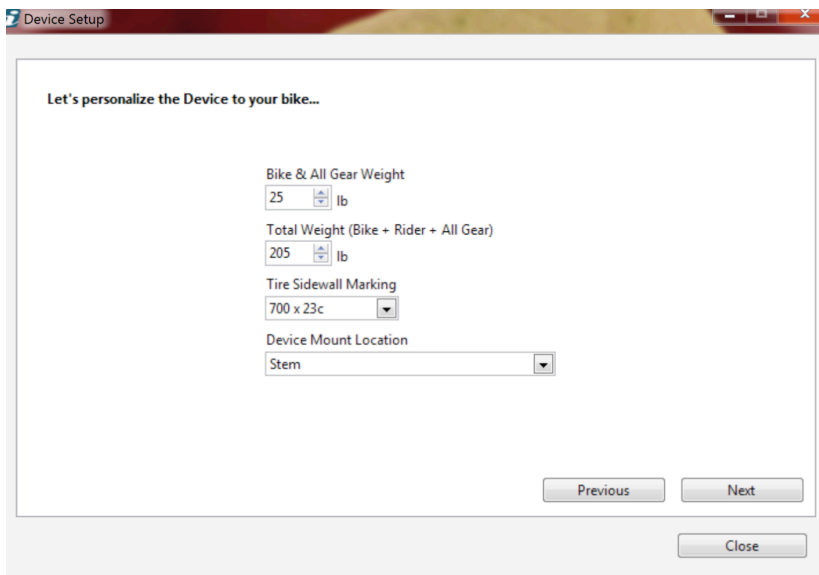
Rider Weight: 180 lb Height: 71 in

Ride Position
Hoods

Previous Next

Close

8. SET YOUR BIKE WEIGHT, TIRE DIAMETER, AND DEVICE LOCATION



The screenshot shows a 'Device Setup' window with the title bar 'Device Setup'. The main content area has the heading 'Let's personalize the Device to your bike...'. Below this, there are four settings: 'Bike & All Gear Weight' with a numeric input field set to '25' and a unit dropdown set to 'lb', 'Total Weight (Bike + Rider + All Gear)' with a numeric input field set to '205' and a unit dropdown set to 'lb', 'Tire Sidewall Marking' with a dropdown menu set to '700 x 23c', and 'Device Mount Location' with a dropdown menu set to 'Stem'. At the bottom right, there are three buttons: 'Previous', 'Next', and 'Close'.

Let's personalize the Device to your bike...

Bike & All Gear Weight: 25 lb

Total Weight (Bike + Rider + All Gear): 205 lb

Tire Sidewall Marking: 700 x 23c

Device Mount Location: Stem

Previous Next

Close

9. SET YOUR TIRE TYPE AND ROAD SURFACE CONDITION

Most road cyclists “Use the Typical Settings”. If you’re riding on a different surface, or have a different bike (such as MTB) the uncheck the box and fill in the settings.

Device Setup

Let's personalize your Device for tires and road type...

☒ Use the Typical Settings [More Info](#)

Road Type
Good Asphalt

Tire Type
Clincher

Tire Grade
Utility

Tire Pressure
110 psi

Not sure? Don't worry! The typical settings work correctly for the majority of cyclists on the road.

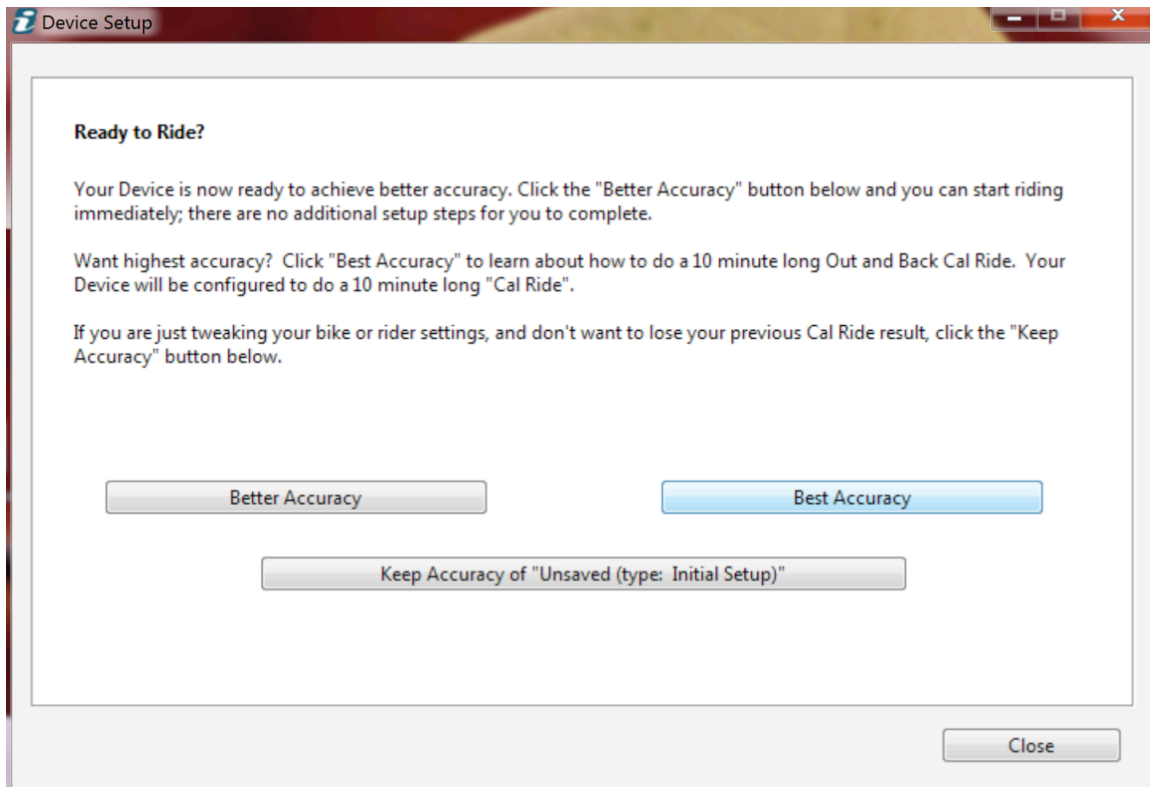
[Previous](#) [Next](#)

[Close](#)

10. SELECT WHAT KIND OF CALIBRATION RIDE YOU WANT TO DO

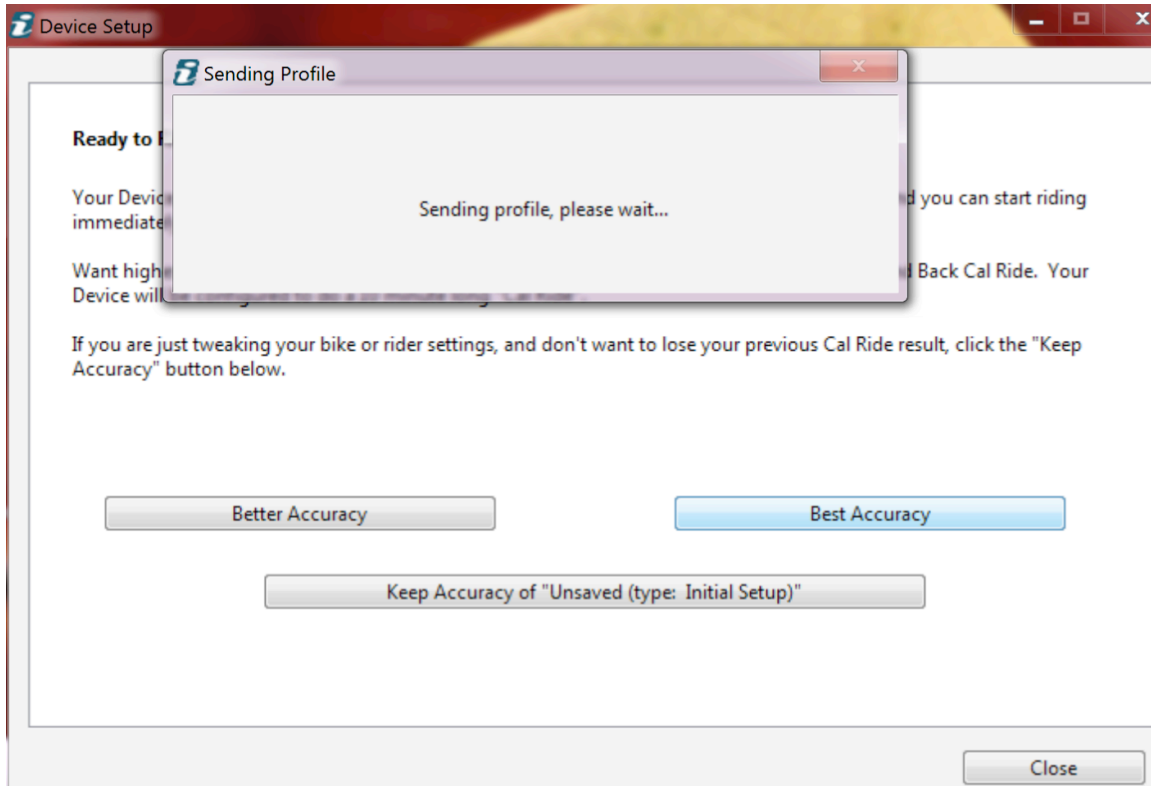
The calibration ride calibrates the Device sensors.

- a. The “**Better Accuracy**” calibration is the simplest—you’ll ride your bike for 5 minutes and then the calibration is finished
- b. The “**Best Accuracy**” calibration is about 10 minutes long—you’ll ride your bike for 5 minutes, stop, turn around, and ride back to your starting point. Best Accuracy improves the performance of the wind sensor.
- c. The “**Keep Accuracy of Current Calibration**” button is shown **ONLY** if you have previously calibrated your Device. If you select this option, then your bike/rider parameters will be updated, *but you will not be required to do a new calibration ride*.

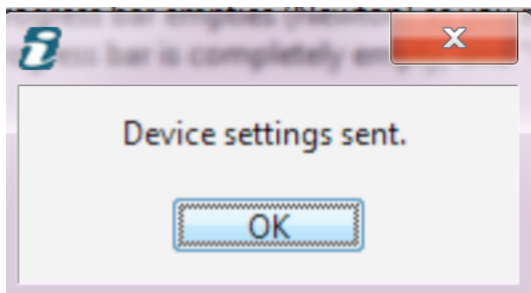


11. SEND YOUR UPDATED PROFILE TO YOUR DEVICE

After making your Accuracy selection, your Device profile will be updated automatically:

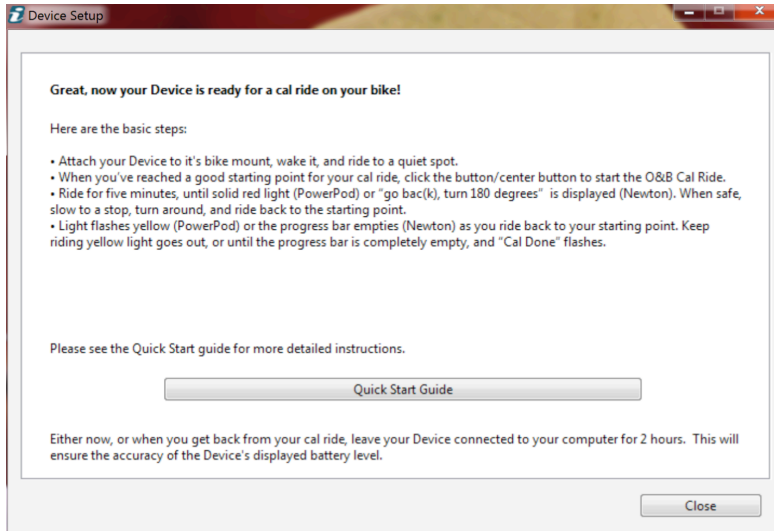


and a confirming message will be shown:

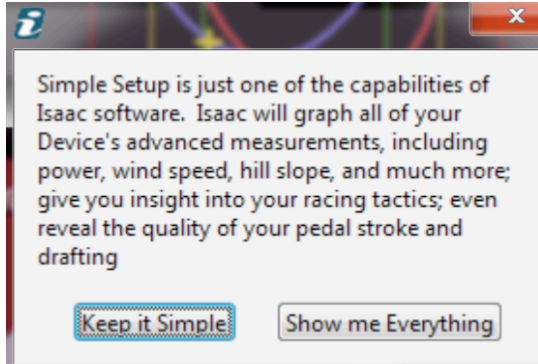


12. INSTRUCTIONS FOR OUT AND BACK CALIBRATION RIDE

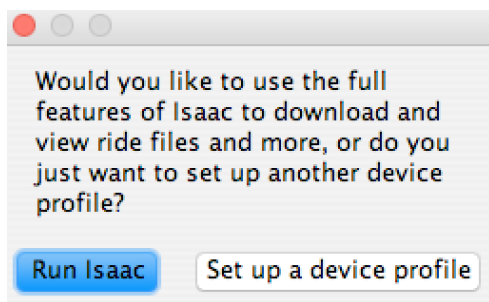
You will now be shown (summarized) instructions for the Out and Back (Best Accuracy) calibration ride. **If you did not select “Best Accuracy”, this page can be skipped.**



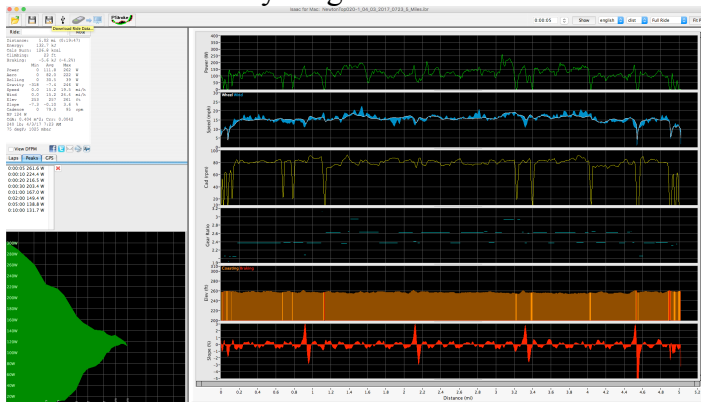
13. DECIDE YOW YOU WANT TO USE ISAAC



- a. If you “just want to ride” and don’t want to work with all of the advanced features of Isaac, then select “Keep it Simple”. Isaac will quit.
- b. Afterwards, each time you launch Isaac, you will be asked if you want to Run Isaac, or just Set up a device profile (Simple Setup):



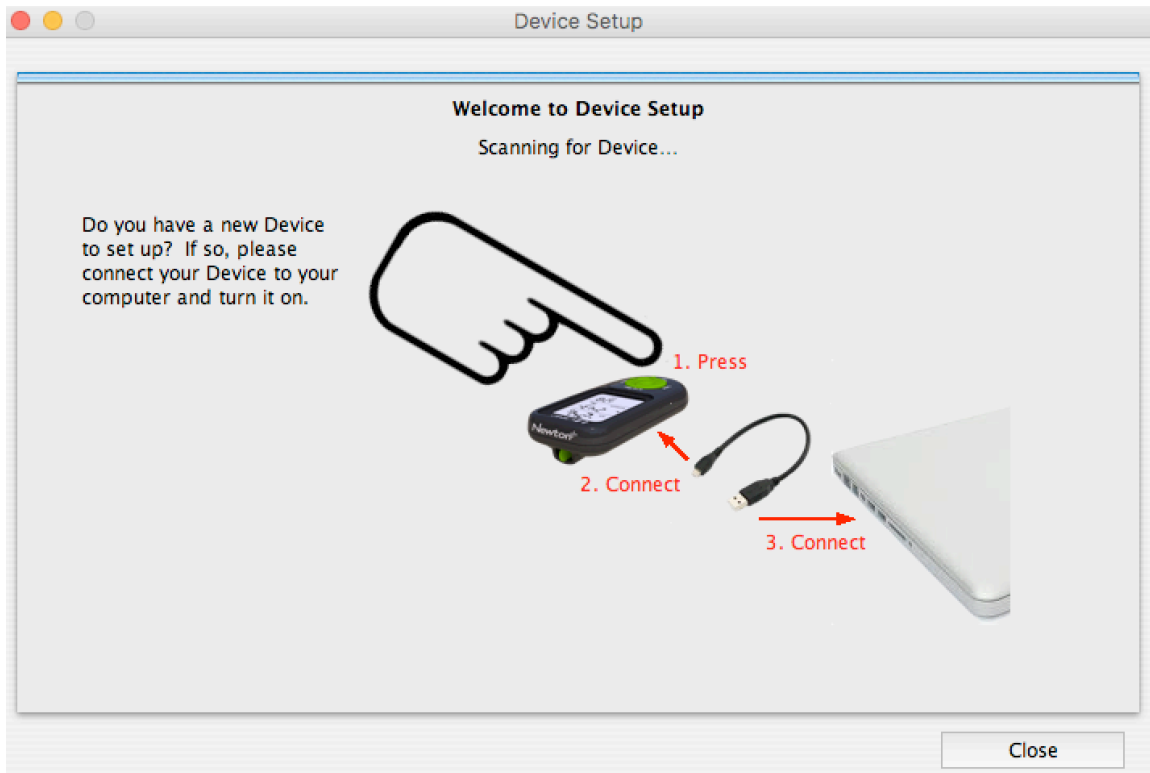
- c. If you want to see all of the capabilities of Isaac software, select the “Show Me Everything” button. Isaac will launch in full mode.



- i. Each time you relaunch Isaac, you will see Isaac in Full Mode
- ii. In “full” mode, if you want to perform another Simple Setup, you can access it through Isaac menu command “Device/Setup Device”

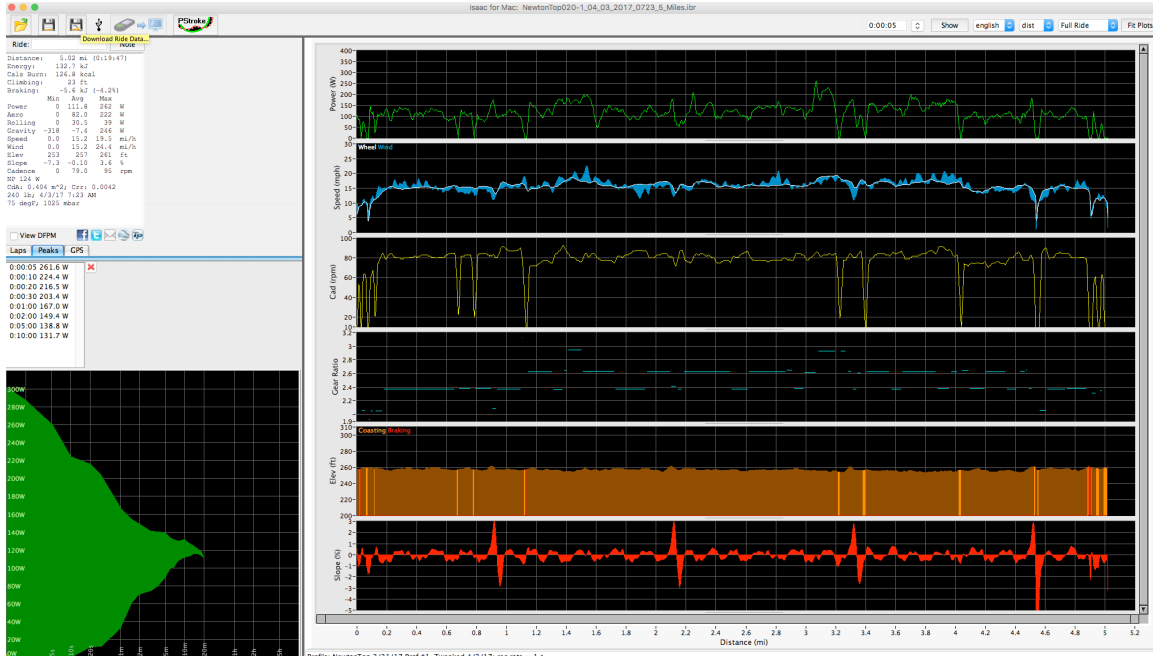
TROUBLESHOOTING

1. When I launch Isaac, I get this screen:



- A. Make sure your Device is turned on (click PowerPod button, click any button of Newton)
- B. Make sure your Device is connected to your computer through the USB cable
- C. If both of the above are correct and you still see this screen, contact technicalsupport@velocomp.com for next steps

2. When I launch Isaac, I get the “full” Isaac screen:



A. If you have previously used Simple Setup procedure, you selected “Show Me Everything” at the end of a previous setup procedure. You will now see the full Isaac screen whenever you launch Isaac. HOWEVER, you can still get access to Simple Setup with the command “Device/Setup Device”

B. If you saw the above screen the FIRST time you launched Isaac, then your computer has previously had a version of Isaac installed on it. No worries: you can still get access to Simple Setup with the command “Device/Setup Device”

OTHER RESOURCES

VELOCOMP FORUM

There are tens of thousands of PowerPod and Newton owners, and here's a great place to meet some of them and get your questions answered:

<http://www.ibikeforum.com>

Sign on as a member so you can learn more about Isaac software, and make sure to contribute your knowledge too!

Or, go to our Facebook page: <https://www.facebook.com/RideVelocomp/>

TECHNICAL SUPPORT

If you have questions regarding the operation of your Isaac software that can't be answered from the help documents and links, please email us at:

technicalsupport@velocomp.com

We will get back to you quickly.